

Engineered for Precision Belt Splicing

Splices in monolithic belting must ensure tight pitch tolerance and be free from pinhole air pockets. Everything about the Amigo™ has been designed to do just that. And in typical Novitool® design, it was made to do it with ease, safety, and speed.

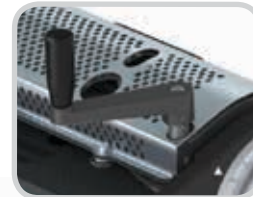
Custom templates secure the belt when cut to ensure accurate pitch control. Then the contactless heating process splices the belt in less than one minute and finishes with a controlled amount of clash. To ensure quality splices, pinholes are avoided through engineered solutions such as the pre-heat function to remove moisture from the belt ends; the shielded heat zone for consistent heating in various environmental conditions; and the contactless heating method. Accuracy, speed, and operator safety are fully integrated into the Amigo design making it an ideal splicing tool for in-shop or on-site splicing.



Integrated Belt Cutter
maintains accurate pitch
in a single pass



Contactless Heating
provides for a controlled
amount of clash without
actual contact with the
heat source



**Shielded Heat Zone and
Temperature Control**
ensures splice parameter
consistency regardless of
ambient temperatures



Operates on **Single Phase**
115V or 230V



**Interchangeable Splice
Templates** for precise pitch
splicing of belts from various
belt manufacturers



Digital Time Control with
quick, simple splice settings;
the **Pre-Heat Setting** can be
used to remove moisture and
avoid pinholes

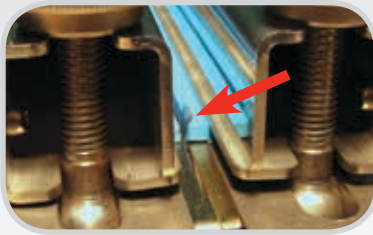


Custom **Transport
Case** for easy storage
and transportation

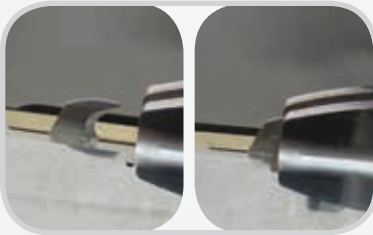


*Patent Number: US 8,770,253 B2, other patents pending

Safety Features of the Amigo™



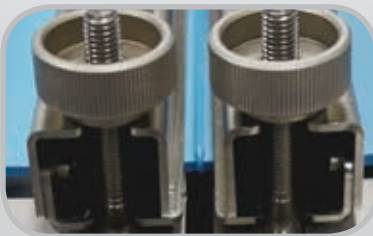
Integrated Cutter: Operator is protected from blade during single pass cutting operation.



Cutter Storage Position: Cutter must be in storage position for splicing function to operate.



Shielded Heat Zone: Guard must be closed for heat emitter to function. Operator is protected from heat source during splicing.



Cool Zone: Heater stows and cools inside unit as belt ends are butt-welded together.

NOVITool® AMIGO™ Splice Press for Monolithic Belts

Amigo™ Press and Cable Ordering Information			
	Ordering Number	Item Code	
Press			
42" (1065 mm)	AMIGO-1000-SPLICEPRESS	08545	
Cables			
115 volt; single phase; 15 amp	AMIGO-1000-CABLE-1X115-IEC520	08585	
230 volt; single phase; 7.5 amp	AMIGO-1000-CABLE-1X230-IECL620	08586	

NOTE: Press, cable, and templates are all purchased separately.

Amigo™ Belt Template Ordering Information					
Item Code	Ordering Number	Belt Manufacturer	Belt Style	Belt Type	
Templates					
08592	AMIGO-1000-TMPLT-08592	Volta	SuperDrive™	FMW & FMB FHW & FHB	
08593	AMIGO-1000-TMPLT-08593	Intralox®	ThermoDrive®	8050 8026	
08594	AMIGO-1000-TMPLT-08594	Habasit	Cleandrive™	CD.M50.S-UA.CB CD.M50.S-UA.WB CD.M25.S-UA.CB CD.M25.S-UA.WB	
08595	AMIGO-1000-TMPLT-08595			Flat	
08596	AMIGO-1000-TMPLT-08596	Gates® Mectrol®	PosiClean®	PC10 PC20	
		UBR	1" Purclean	PS2	
			2" Purclean	PB3	
08597	AMIGO-1000-TMPLT-08597	Gates® Mectrol®	CenterClean®	CC40	
		UBR	Center Drive PurClean	CD3BLSS	
08603	AMIGO-1000-TMPLT-08603	Ammeraal	Aeon	Aeon-50 UBM	
08710	AMIGO-1000-TMPLT-08710	Cog-veyor Systems Inc.	Cog-veyor	UWM PBH PWH	
08739	AMIGO-1000-TMPLT-08739	Beltservice Corporation	Magnethane™	PD1	
08741	AMIGO-1000-TMPLT-08741			Flat w/Spikes PC20	
08776	AMIGO-1000-TMPLT-08776	Gates® Mectrol®	PosiLace™	CC40	
				FC12	
				REO-T50 DB REO-T50 SB REO-T50 W REO-M25 DB	
08788	AMIGO-1000-TMPLT-08788	Daisler®	REOclean®	FMW & FMB FHW & FHB	
				Volta	DualDrive™
					Mini DualDrive™
					Mini SuperDrive™
08796	AMIGO-1000-TMPLT-08796	Ammeraal Beltech	Soliflex Pro	N/A	
08847	AMIGO-1000-TMPLT-08847	Volta	Hinge Splice	M (2.5-5mmH)	

Amigo™ Optional Accessories		
	Ordering Number	Item Code
Skiving Tool	RTBS Rough Top Skiver	03239
Replacement Blades for Amigo	AMIGO-1000-BLADES-5	08587
High – Low Temp Friction Tape for Flat Belts	AMIGO-FRICTIONTAPE-33X25	08604

Amigo™ Dimension Information		
	Dimensions	Weight
Machine	56.1" (1425 mm) × 12.4" (315 mm) × 6.7" (170 mm)	85 lb (38.5 kg)
Transport Case (includes additional templates and support equipment)	66.9" (1700 mm) × 19.3" (490 mm) × 15.2" (385 mm)	80 lb (36.3 kg)
Total Weight		165 lb (74.8 kg)

Authorized Distributor:

2525 Wisconsin Avenue • Downers Grove, IL 60515-4200 • USA
Tel: (630) 971-0150 • Fax: (630) 971-1180 • E-mail: info@flexco.com

Visit www.flexco.com for other Flexco locations and products.

©2019 Flexible Steel Lacing Company. Novitool® is a registered trademark. 02/05/19. For Reorder: X3447
Intralox® and ThermoDrive® are registered trademarks of Lairtram L.L.C.

